



NAME TAG PIN
DOLL
By
Judi Wellnitz,
© March 2003
<http://www.artdolls.info>

Supplies:

- Scraps of flesh fabric for head
- Scraps of two different color fabrics for disc and arms
- Stuffing
- Heavy thread
- One chenille stem for arms
- Cardboard
- Felt
- Pin back or safety pin
- Various embellishments

Preparation:

Head and arm pattern pieces are templates you sew around before cutting out. Use a very small stitch and sew around the face as indicated. Leave the back open and just cut straight down the line. Sew around the arms leaving an opening for stuffing as indicated. Cut out adding a scant seam allowance. Clip curves, clip between thumb and mitt, and at corners of neck. Cut out the small discs - one of felt, one of batting, and one of cardboard. Cut out the head ovals, one of felt and one of cardboard. The large fabric disc is not sewn at all. If you aren't going to use an embroidery machine for your name you can cut it out now also.

Hint: If you draw your arm pattern onto freezer paper - only draw half the arm. Then fold the paper in half and cut out - like you used to do with hearts - that way the 2 sides will match. At least until you sew them!

Head:

Sew as directed. Turn inside out. Using heavy thread, hand sew a gathering stitch around the back of the head. Put a small piece of stuffing into nose, hold in place with a pin. She has a big nose!! Put a big piece of stuffing in the head, cover with the cardboard circle, and pull up the gathering stitches. Tuck stuffing down inside while you pull the stitches tight. Secure stitches. Paint face. Sculpt face if desired. I didn't ... but you might want to. You'll add hair or other 'stuff' later. I like to do the face before I sew it to the neck in case I mess it up (you know - the "U" word ... ugly!).

Arms:

Sew as directed. Use turning tools to turn thumb first, then mitt hands. Pull through opening. Pull neck tab through last. Take a chenille stem and lay on top of arm and cut as needed to fit. Make sure both ends are bent under so you don't have sharp ends to poke holes in the fabric. Put chenille stem into arms and add stuffing as needed. Ladder stitch opening closed.

Disc:

The disc will gather to about a 2 1/2" circle. [If you are going to use an embroidery machine, use about a 2 to 2- 1/4" diameter circle to put your name design in. Center your sewn design on the large circle template and cut out.] Using heavy thread hand sew a gathering stitch 1/8" in from the edge of the disc. Lay batting and cardboard down on the fabric and pull the gathering stitches tight. Turn over and center your design if you embroidered. Secure stitches. If you are going to draw your name on do so now. Embellish the disc. Go crazy - fringe it with beads, ring it with lace or fur, make a statement!

Assembly:

Ladder stitch head to neck tab.

Attach arms to disc by whatever method you are comfortable with - sewing or gluing.

You can perch the arms on top of the disc or, as I did, lay them on the disc itself.

Embellish the head - add hair, or a lace bonnet, or fur ruff, whatever you fancy.

Glue the two felt circles to the cardboard to cover the fabric gathers and give it a finished look.

Sew your pin back to the felt and you have a unique name tag!

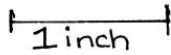
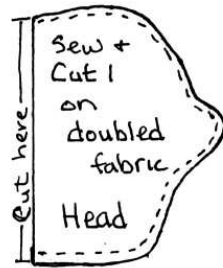
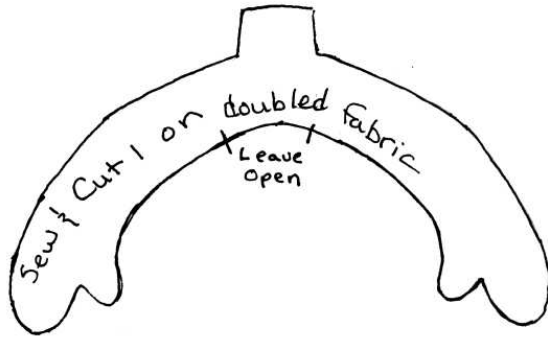
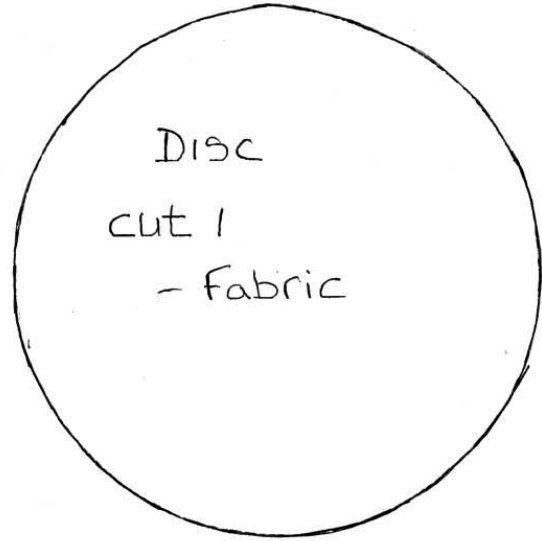
Have fun!!

Questions? - Email me at ak.icecube@gmail.com

Thanks to the following people for teaching me techniques I used in this doll:

Margaret Blatchford

Sue Farmer



Sew around face shape.
Cut straight down back of head.