

# DOLL STREET DOLL CLOTHING

## PATTERNS AND INSTRUCTIONS

---

### Materials

- 1 fat quarter (tunic)
- 1 fat quarter (vest)
- trim, beads, buttons (embellishment)

The sample Doll Street Doll is wearing two pieces of clothing: a tunic and overvest. The tunic is made of two separate but identical halves. The two completed pieces are joined and attached on the doll. Seam allowances have been included on the tunic. The one-piece vest is self-lined. The vest template does not include seam allowances.

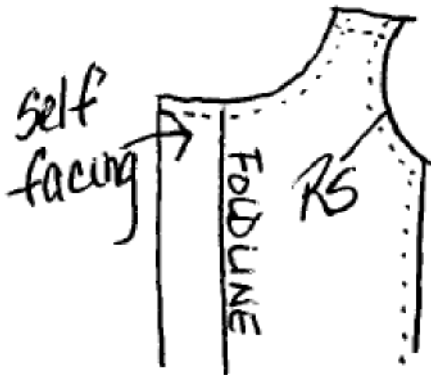
### Tunic

Cut tunic pieces.

Transfer dart markings to tunic front. Fold along center line, matching stitching lines. Sew on stitching lines. Press dart downward or cut along center fold line of dart to within 1/8" of point. Press open.

Press along the 3/8" fold line on each tunic front. Clean finish by turning under 1/8" and stitching close to edge. RST, fold along fold line and stitch across at neck edge, ending at self-facing. Trim neck edge seam allowance to

1/8". Turn self-facings right side out to create a neck seam allowance (1/4").



Repeat for other tunic half.

Sew one tunic front to tunic back at shoulder seam (1/4" seam allowance). Press seam open. Repeat for remaining tunic half.

The neck seam allowance created earlier will be used as the neck facing. On one tunic piece, with wrong sides together, using 1/4" seam allowance created earlier, stitch close to neck edge beginning at tunic front neck edge and ending at tunic back



neck edge. Repeat for remaining tunic half.

You now have two tunic halves, each with a front and back tunic piece. Each tunic half will now be called right and left tunic half.

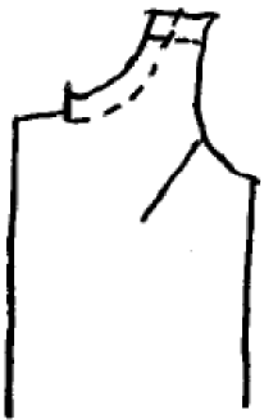
### Tunic Sleeves

This fitted sleeve will fit into tunic armhole. Pin sleeve to right tunic half, placing pins at side seams and shoulder seams, easing remainder of sleeve into armhole. Clip curves to ease sleeve into armhole. Stitch around armhole, smoothing fabric pieces as you sew.



Fold along hemline indicated (1/2" hem allowance)

and press flat. Clean finish sleeve hemline by folding under 1/4" and stitching close to folded edge.



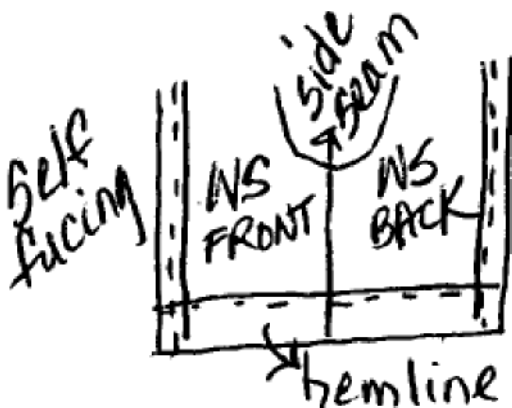
Stitch sleeve and side seam of right tunic half in one continuous stitching line (3/8" seam allowance). Press seam open. Turn right tunic half right side out. Repeat for second tunic half.

### Bottom Edge of Tunic

The bottom edge of the tunic is prepared the same as neck edge. With right sides together, fold one tunic half along fold line at bottom front edge. Stitch across bottom edge, allowing for a 1/2" hem. End stitching at self-facing. Trim seam allowance to 1/4" and turn self-facing right side out. Repeat for remaining tunic half.

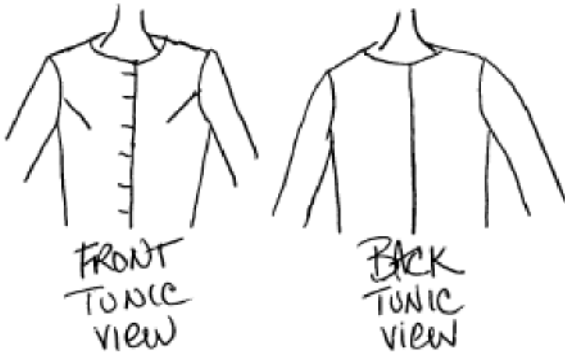
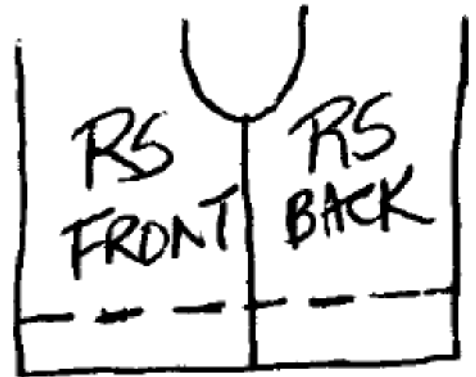
Press 1/2" hemline on each tunic half. Turn hemline allowance under 1/4" and press. Stitch close

to folded edge, beginning with tunic front bottom edge and ending with tunic back bottom edge.



## Assembling Tunic

Place right and left tunic halves on doll body with darts in front. Match center front of both halves, making adjustments for fit as necessary. Close with ladder stitch. Embellish front seam with your choice of beads, buttons or trim. The sample doll uses beads to simulate buttons.



## Vest

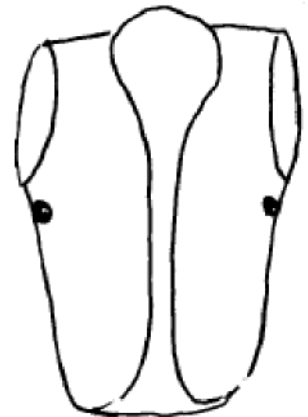
Vest pieces do not include seam allowances. Prepare templates.

This self-lined vest uses two different fabrics, or you may piece together many different fabrics before tracing and cutting vest pieces.

With rst, trace pattern onto fabric. Sew on traced line, leaving open where indicated. Cut out approximately 1/8" from stitching, except leave 1/4" at opening.

Turn vest right sides out by pulling vest fronts through shoulders, then pulling remainder of vest through opening. Press. Close opening with ladder stitch.

Place vest on doll over tunic. Overlap side extensions front over back. Adjust for desired fit. Place a bead or button at X on pattern to secure sides. Embellish vest.



The sample doll is wearing buttons for earrings and a necklace with a doll charm. Her scarf blowing in the wind is fashioned from a wired ribbon. Let your creative juices flow!

---

**She's done - isn't she a beauty?!**

---